

**DOCUMENTS
on DEPOSIT**



**These documents should remain
available for public inspection
until 8 March 2021**

In the District of Dover

**THE KENT COUNTY COUNCIL
(VARIOUS ROADS, DOVER DISTRICT) (WAITING
RESTRICTIONS AND STREET PARKING PLACES)
(AMENDMENT No.80) ORDER 2021**

Road Traffic Regulation Act 1984

Please return to:

Schemes Planning and Delivery Team

Kent County Council Highways, Transportation & Waste
Ashford Highway Depot
Javelin Way
Ashford
TN24 8AD

PUBLIC NOTICE



In the District of Dover
THE KENT COUNTY COUNCIL
(VARIOUS ROADS, DOVER DISTRICT) (WAITING RESTRICTIONS AND STREET
PARKING PLACES) (AMENDMENT No.80)
ORDER 2021

Road Traffic Regulation Act 1984

Notice is hereby given that KENT COUNTY COUNCIL under sections 1(1), 2 (1) to (3), 3 (2), 4 (1) and (2), 32 (1), 35 (1), 44, 45, 46, 49 and 53 of the Road Traffic Regulation Act 1984 (hereinafter called "the Act") and of all other enabling powers, and after consultation with the chief officer of police in accordance with Paragraph 20 of Schedule 9 to the Act, hereby proposes to make the following order:-

The effect of the Order will be to introduce new or to extend or amend existing waiting restrictions in the following lengths of road (in this part of the notice DYL means waiting to be prohibited at all times by double yellow lines at the times prescribed below).

Roads in Dover in the District of Dover

CHURCH STREET – (1) On the eastern side between Stembrook and The Gateway Offices boundary remove the parking bays and replace with double yellow lines and a coach bay with a 20 mins stay with no return for 1 hour. (2) On the western side between Stembrook and St Mary's Passage remove the parking bays and disabled bays and replace with a coach bay with 20 mins stay with no return for 1 hour. **CASTLE STREET** – On the south eastern side between Dolphin Passage and Church Street remove the parking bays and replace them with a loading bay which is in force 24 hours per day and a bus clearway. **KING STREET** – (1) On the eastern side between Castle Street and Fishmongers Lane remove the taxi rank and parking bays and replace them with double yellow lines and a loading bay which is in force 24 hours per day with a maximum stay of 40 mins with no return for 2 hours. (2) On the western side between Cannon Street and Queen Street remove the lay bay and replace it with double yellow lines and a loading bay which is in force 24 hours per day with a maximum stay of 40 mins with no return for 2 hours.

A full statement of the Council's reasons for making the proposed Order, a plan indicating the location and the effect and a copy of any other Orders which will be amended by the proposed Order may be examined at Kent Highways, Transportation & Waste, Ashford Highway Depot, Henwood Industrial Estate, Unit 4 Javelin Way, Ashford, Kent TN24 8AD by appointment booked through tro@kent.gov.uk or viewed online from 12 February 2021 at www.kent.gov.uk/highwaysconsultations

Representations supporting or objecting to the proposed Order can be made via our website using the above link or alternatively you can write to The TRO Co-ordinator, Schemes Planning & Delivery Team, Highways, Transportation & Waste, Kent County Council, Ashford Highway Depot, Henwood Industrial Estate, Javelin Way, Ashford, TN24 8AD by 12 noon Monday 8 March 2021.

Simon Jones Director of Highways, Transportation & Waste

STATEMENT of REASON



In the District Of Dover

THE KENT COUNTY COUNCIL
(VARIOUS ROADS, DOVER DISTRICT)
(WAITING RESTRICTIONS AND STREET PARKING PLACES)
(AMENDMENT No.80) ORDER 2021

ROAD TRAFFIC REGULATION ACT 1984

The Kent County Council acting as the Local Traffic Authority intends to make the Order referred to above and as shown on the drawings accompanying this document giving better vehicle access to the town centre for residents and visitor's

- **For avoiding danger to persons or other traffic using the road or any other road for preventing the likelihood of any such danger arising.**
- **For preserving or improving the amenities of the area through which the road runs.**
- **For facilitating the passage on the road or any other road of any class of traffic (including pedestrians).**

Nikola Floodgate

Schemes Planning and Delivery Manager
Highways, Transportation & Waste

THE KENT COUNTY COUNCIL
(VARIOUS ROADS, DOVER DISTRICT)
(WAITING RESTRICTIONS AND STREET PARKING PLACES)
(AMENDMENT No.80) ORDER 2021

ROAD TRAFFIC REGULATION ACT 1984

The KENT COUNTY COUNCIL, acting as the Local Traffic Authority and in exercise of its powers under Sections 1(1), 2(1) to (3), 3(2), 4(1) and (2), 32(1), 35(1), 45, 46, 49, 53, 122 and 124 of the Road Traffic Regulation Act 1984 (hereinafter called “the Act”) and of all other enabling powers and after consultation with the Chief Officer of Police in accordance with Paragraph 20 of Schedule 9 to the Act, hereby propose to make the following Order:-

Revocations, Modifications and Amendments

1. Without prejudice to anything done or to any liability incurred in respect of any act or omission before the coming into operation of this Notice, the particular provision the Traffic Regulation Order which establishes a taxi rank in King Street, Dover is hereby revoked.
2. In this Order the expression “Order of 2005” means "The Kent County Council (Various Roads, Dover District) (Waiting Restrictions and Street Parking Places) Order 2005”. The Order of 2005 and shall have effect as though:

In the Schedule to the Order of 2005

SCHEDULE 1.00
NO WAITING AT ANY TIME

The following entries to be added to the First Schedule of the Order of 2005 in place of the existing entries:-

Roads in Dover in the District of Dover

CHURCH STREET (1) On the eastern side

(a) from its junction with Castle Street for a distance of 40 metres in a northerly westerly direction;

(b) from its junction with Stembrook for a distance of 17 metres in a southerly direction.

(2) On the western side

(a) from its junction with Castle Street to a point in line with the south side of St Mary’s Passage;

(b) from a point 35 metres north of a point in line with the south side of St Mary’s Passage to its junction with Stembrook.

KING STREET (1) On the eastern side

(a) from its junction with Castle Street for a distance of 18 metres in a southerly direction;

(b) from its junction with Fishmonger's Lane for a distance of 47 metres in a northerly direction.

(2) On the western side

(a) from its junction with Market Square for a distance of 29 metres in southerly direction;

(b) from its junction with Queen Street for a distance of 14 metres in a northerly direction.

In the Schedule to the Order of 2005

SCHEDULE 3.40 LIMITED WAITING MON-SAT 8.30AM-5.30PM 1 HOUR IN ANY PERIOD OF 3 HOURS

The following entries to be deleted from the Third Schedule of the Order of 2005:-

Roads in Dover in the District of Dover

CHURCH STREET (1) On the eastern side from a point in line with the boundary of Stembrook Court and the Trustees Savings Bank to a point 10 metres north of a point in line with the boundary between Stembrook Court and the Roman Quay Public House.

(2) On the western side from a point in line with the south side of St Mary's Passage northwards for a distance of 35 metres.

KING STREET On the eastern side from a point 30 metres south of the boundary of Dolphin House and Nos.66/68 Castle Street for a distance of 24 metres in a southerly direction.

In the Schedule to the Order of 2005

SCHEDULE 5.30 PAY AND DISPLAY PARKING PLACES MON-SAT 8.30AM-5.30PM FOR MOTOR CARS (INCLUDING GOODS VEHICLES UP TO 3500KG), MOTOR CYCLES AND INVALID CARRIAGES

The following entry to be added to the Fifth Schedule of the Order of 2005 in place of the existing entry:-

Roads in Dover in the District of Dover

CASTLE STREET (1) On the south-eastern side

(a) from a point 9.2 metres south-west of the centre line of Russell Street to a point 18.4 metres south-west of the centre line of Dolphin Passage;

(b) from a point 22.2 metres south-west of the centre line of Maison Dieu Road (south eastern part) to a point 18.5 metres north-east of the centre line of Russell Street.

In the Schedule to the Order of 2005

**SCHEDULE 7.00
DISABLED PERSONS' PARKING PLACES**

The following entry to be deleted from the Seventh Schedule of the Order of 2005:-

Roads in Dover in the District of Dover

CHURCH STREET On the north-western side from a point 6 metres north of its junction with St Mary's Passage to a point 6 metres south of its junction with St Mary's Passage.

In the Schedule to the Order of 2005

**SCHEDULE 8.40
BUS PARKING PLACE 24 HOURS
WAITING LIMITED TO 20 MINUTES IN ANY PERIOD OF 1 HOUR**

The following entries to be added as a new Schedule of the Order of 2005 in the correct alphabetical sequence:-

Roads in Dover in the District of Dover

CHURCH STREET (1) On the eastern side from a point 17 metres south of the junction with Stembrook for a distance of 19 metres in a southerly direction.

(2) On the western side from a point 22 metres south west of the junction with Stembrook for a distance of 41 metres in a southerly direction.

In the Schedule to the Order of 2005

**SCHEDULE 10.00
GOODS VEHICLE LOADING BAY**

The following entries to be added to the Tenth Schedule of the Order of 2005 in the correct alphabetical sequence:-

Roads in Dover in the District of Dover

CASTLE STREET On the south-eastern side from a point 9 metres south-west of its junction with Dolphin Passage for a distance of 19 metres in a south-westerly direction.

SCHEDULE 10.30
LOADING BAY 24 HOURS
WAITING LIMITED TO 40 MINUTES IN ANY PERIOD OF 2 HOURS

The following entries to be added as a new Schedule of the Order of 2005 in the correct alphabetical sequence:-

Roads in Dover in the District of Dover

KING STREET On the eastern side from a point south of the junction with Castle Street for a distance of 29 metres in a southerly direction.

(2) On the western side from a point 30 metres south of the junction with Cannon Street for a distance of 28 metres in a southerly direction.

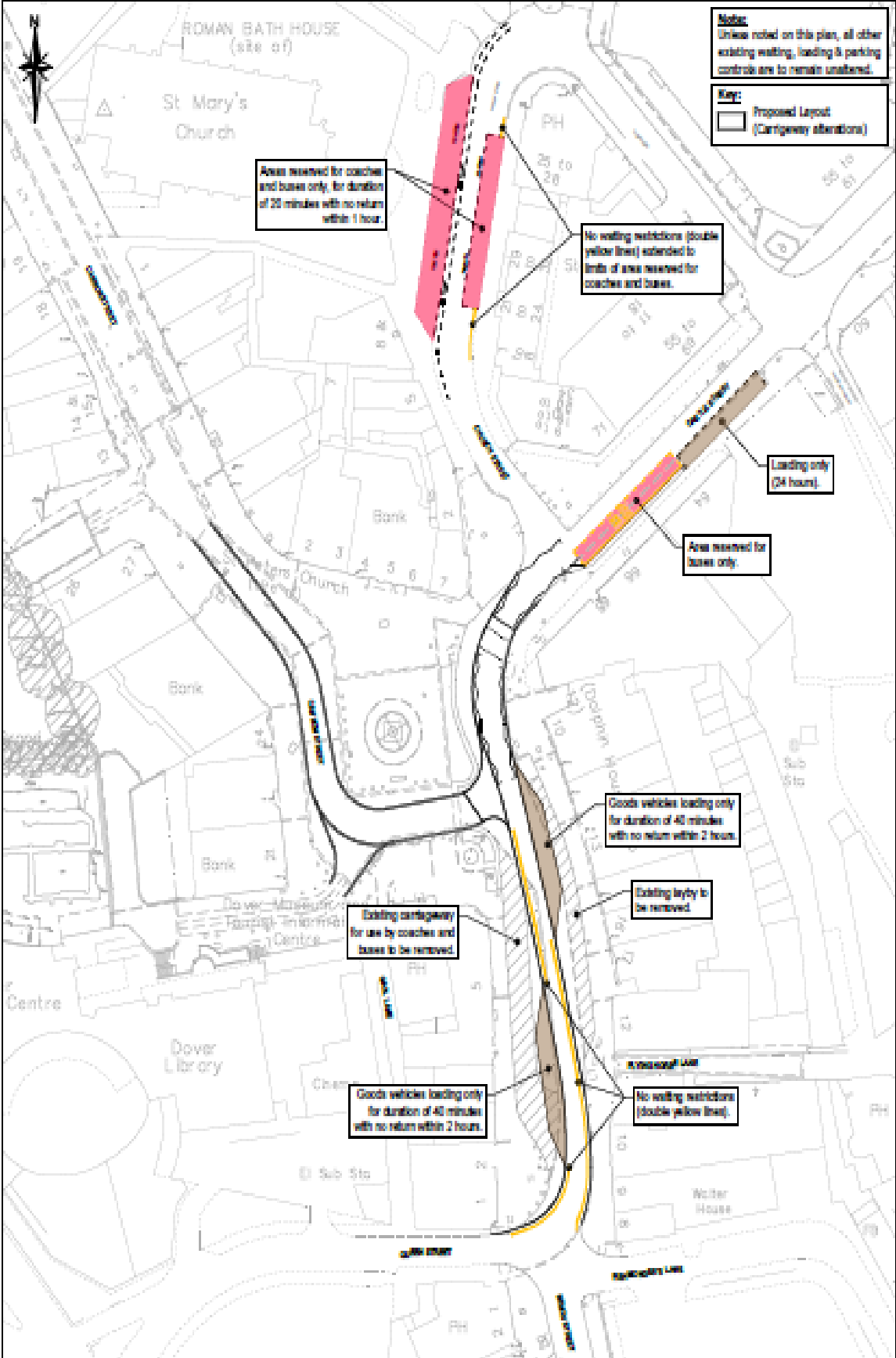
This Order may be cited as “The Kent County Council (Various Roads, Dover District) (Waiting Restrictions and Street Parking Places) (Amendment No.80) Order 2021” (‘this Order’) and shall come into operation on the ** day of ***** 2021

GIVEN under the Common Seal of The Kent County Council

This day of 2021

THE COMMON SEAL OF THE
KENT COUNTY COUNCIL was
hereunto affixed in the
presence of:-

Authorised signatory



| | | | | |
|---|---|---------------------------|-----------------------------------|------------------------|
| <p>Charles & Associates</p> <p>100 High Street Dover Kent CT16 3ET Tel: 01323 831111 Fax: 01323 831112 www.charlesandassociates.co.uk</p> | <p>Job Title Dover Market Square</p> | <p>Rev NTS</p> | <p>Date Dec 20</p> | <p>Designed DH</p> |
| | <p>Project Title Waiting, Loading & Parking Controls</p> | <p>Drawn DH</p> | <p>Checked MM</p> | <p>Approved MM</p> |
| | <p>Client Dover District Council</p> | <p>Job No. 20-027</p> | <p>Drawing No. 20-027-017</p> | <p>Rev H</p> |