

**DOCUMENTS  
on DEPOSIT**

**Kent  
County  
Council**  
kent.gov.uk



**These documents should remain  
available for public inspection  
until Wednesday 3 March 2021**

**THE KENT COUNTY COUNCIL  
(VARIOUS ROADS, TONBRIDGE)  
(THE BOROUGH OF TONBRIDGE & MALLING)  
(20MPH SPEED LIMIT)  
EXPERIMENTAL ORDER 2020**

Please return to:

**Schemes Planning and Delivery Manager  
Kent County Council Highways, Transportation & Waste  
Ashford Highway Depot  
Javelin Way  
Ashford  
TN24 8AD**

**THE KENT COUNTY COUNCIL**  
**(VARIOUS ROADS, TONBRIDGE)**  
**(THE BOROUGH OF TONBRIDGE & MALLING)**  
**(20MPH SPEED LIMIT)**  
**EXPERIMENTAL ORDER 2020**

**ROAD TRAFFIC REGULATION ACT 1984**

The Kent County Council, acting as Local Traffic Authority and in exercise of its powers under Sections 9 and 10 of, and Part VI of Schedule 9 to, the Road Traffic Regulation Act 1984 (hereinafter referred to as “the Act”) as amended, and of all other enabling powers and after consultation with the Chief Officer of Police in accordance with Part III of Schedule 9 to the Act, hereby make the following Order.

Suspension of Existing Restrictions whilst Experimental Order in Force

1. For the duration of this Order, and in so far as they relate to the lengths and sides of road specified in the Schedule to this Order, those parts of “The Kent County (Various Roads, The Borough of Tonbridge & Malling) (20MPH, 30MPH, 40MPH, 50MPH Speed Limits and Derestricted Roads) Consolidation Order 2012” (‘the Order of 2012’) and all subsequent Amendments shall be suspended.

20MPH Speed Limit

2. No person shall drive any motor vehicle at a speed exceeding 20MPH on the lengths of roads specified in the Schedule to this Order.

Revocation

3. This Order shall revoke the “The Kent County Council (Various Roads, Tonbridge) (The Borough of Tonbridge & Malling) (20MPH Speed Limit) Experimental Order 2020” (‘the Order of 2020’) dated 30 July 2020.

The Schedule

<b>Item No</b>	<b>Road Name</b>	<b>Parish</b>	<b>Description</b>
1	Albany Close	TONBRIDGE	For its entire length.
2	Albert Road	TONBRIDGE	For its entire length.
3	Alders Meadow	TONBRIDGE	For its entire length.
4	Aldwych Close	TONBRIDGE	For its entire length.
5	Alexandra Road	TONBRIDGE	For its entire length.
6	Allington Drive	TONBRIDGE	For its entire length.
7	Amberley Close	TONBRIDGE	For its entire length.
8	Angel Lane	TONBRIDGE	For its entire length.
9	Annison Street	TONBRIDGE	For its entire length.
10	Arne Close	TONBRIDGE	For its entire length.
11	Arnolds Court	TONBRIDGE	For its entire length.
12	Arundel Close	TONBRIDGE	For its entire length.
13	Ashburnham Road	TONBRIDGE	For its entire length.
14	Ashden Walk	TONBRIDGE	For its entire length.
15	Atkins Close	TONBRIDGE	For its entire length.

16	Audley Avenue	TONBRIDGE	For its entire length.
17	Audley Rise	TONBRIDGE	For its entire length.
18	Avebury Avenue	TONBRIDGE	For its entire length.
19	Avenue Du Puy	TONBRIDGE	For its entire length.
20	Avenue Le Puy	TONBRIDGE	For its entire length.
21	Avon Close	TONBRIDGE	For its entire length.
22	Baker Lane	TONBRIDGE	For its entire length.
23	Baltic Road	TONBRIDGE	For its entire length.
24	Bank Street	TONBRIDGE	For its entire length.
25	Barchester Way	TONBRIDGE	For its entire length.
26	Barclay Avenue	TONBRIDGE	For its entire length.
27	Barden Park Road	TONBRIDGE	For its entire length.
28	Barden Road	TONBRIDGE	For its entire length.
29	Beaulieu Road	TONBRIDGE	For its entire length.
30	Beecham Road	TONBRIDGE	For its entire length.
31	Beechmont Rise	TONBRIDGE	For its entire length.
32	Beverley Crescent	TONBRIDGE	For its entire length.
33	Bickmore Way	TONBRIDGE	For its entire length.
34	Bishops Close	TONBRIDGE	For its entire length.
35	Bishops Oak Ride	TONBRIDGE	For its entire length.
36	Bliss Way	TONBRIDGE	For its entire length.
37	Bordyke	TONBRIDGE	For its entire length.
38	Botany	TONBRIDGE	For its entire length.
39	Bourne Close	TONBRIDGE	For its entire length.
40	Bourne Lane	TONBRIDGE	For its entire length.
41	Bracken Walk	TONBRIDGE	For its entire length.
42	Bradford Street	TONBRIDGE	For its entire length.
43	Bradley Street	TONBRIDGE	For its entire length.
44	Brantingham Close	TONBRIDGE	For its entire length.
45	Briar Walk	TONBRIDGE	For its entire length.
46	Brickworks Close	TONBRIDGE	For its entire length.
47	Brindles Field	TONBRIDGE	For its entire length.
48	Brindle's Field	TONBRIDGE	For its entire length.
49	Brionne Gardens	TONBRIDGE	For its entire length.
50	Britten Close	TONBRIDGE	For its entire length.
51	Brock Lane	TONBRIDGE	For its entire length.
52	Brook Street	TONBRIDGE	From its junction with Quarry Hill Road to a point 12 metres east of its junction with Lower Haysden Lane.
53	Brookes Gardens	TONBRIDGE	For its entire length.
54	Burns Crescent	TONBRIDGE	For its entire length.
55	Cage Green Road	TONBRIDGE	For its entire length.
56	Caistor Road	TONBRIDGE	For its entire length.
57	Cannons Wharf	TONBRIDGE	For its entire length.
58	Canterbury Crescent	TONBRIDGE	For its entire length.
59	Cardinal Close	TONBRIDGE	For its entire length.
60	Castle Street	TONBRIDGE	For its entire length.

61	Castlefields	TONBRIDGE	For its entire length.
62	Cavendish Close	TONBRIDGE	For its entire length.
63	Caxton Mews	TONBRIDGE	For its entire length.
64	Cedar Crescent	TONBRIDGE	For its entire length.
65	Chaucer Gardens	TONBRIDGE	For its entire length.
66	Cherry Grove	TONBRIDGE	For its entire length.
67	Cherry Tree Road	TONBRIDGE	For its entire length.
68	Cherwell Close	TONBRIDGE	For its entire length.
69	Chestnut Walk	TONBRIDGE	For its entire length.
70	Chestnuts Close	TONBRIDGE	For its entire length.
71	Cheviot Close	TONBRIDGE	For its entire length.
72	Chichester Road	TONBRIDGE	For its entire length.
73	Chiltern Way	TONBRIDGE	For its entire length.
74	Church Lane	TONBRIDGE	For its entire length.
75	Church Street	TONBRIDGE	For its entire length.
76	Clare Avenue	TONBRIDGE	For its entire length.
77	Clyde Road	TONBRIDGE	For its entire length.
78	Colin Blythe Road	TONBRIDGE	For its entire length.
79	College Avenue	TONBRIDGE	For its entire length.
80	Colne Road	TONBRIDGE	For its entire length.
81	Commercial Road	TONBRIDGE	For its entire length.
82	Constable Road	TONBRIDGE	For its entire length.
83	Copper Beech View	TONBRIDGE	For its entire length.
84	Cornfield Way	TONBRIDGE	For its entire length.
85	Coventry Road	TONBRIDGE	For its entire length.
86	Cowdreys	TONBRIDGE	For its entire length.
87	Crabapple Road	TONBRIDGE	For its entire length.
88	Cranford Road	TONBRIDGE	For its entire length.
89	Croft Close	TONBRIDGE	For its entire length.
90	Cromer Street	TONBRIDGE	For its entire length.
91	Dame Kelly Holmes Way	TONBRIDGE	For its entire length.
92	Danvers Road	TONBRIDGE	For its entire length.
93	Darenth Avenue	TONBRIDGE	For its entire length.
94	Darwin Drive	TONBRIDGE	For its entire length.
95	Deakin Leas	TONBRIDGE	For its entire length.
96	Delius Drive	TONBRIDGE	For its entire length.
97	Denbeigh Drive	TONBRIDGE	For its entire length.
98	Dernier Road	TONBRIDGE	For its entire length.
99	Derwent Road	TONBRIDGE	For its entire length.
100	Dodd Road	TONBRIDGE	For its entire length.
101	Douglas Road	TONBRIDGE	For its entire length.
102	Dove Road	TONBRIDGE	For its entire length.
103	Dowgate Close	TONBRIDGE	For its entire length.
104	Drayton Road	TONBRIDGE	For its entire length.
105	Driffield Gardens	TONBRIDGE	For its entire length.
106	Dry Bank Court	TONBRIDGE	For its entire length.
107	Dry Bank Road	TONBRIDGE	For its entire length.
108	Dry Hill Park Crescent	TONBRIDGE	For its entire length.

109	Dry Hill Park Road	TONBRIDGE	For its entire length.
110	Dry Hill Road	TONBRIDGE	For its entire length.
111	Dudley Keen Court	TONBRIDGE	For its entire length.
112	East Street	TONBRIDGE	For its entire length.
113	Eastfield Gardens	TONBRIDGE	For its entire length.
114	Elgar Close	TONBRIDGE	For its entire length.
115	Elm Lane	TONBRIDGE	For its entire length.
116	Elmshurst Gardens	TONBRIDGE	For its entire length.
117	Ely Gardens	TONBRIDGE	For its entire length.
118	Estridge Way	TONBRIDGE	For its entire length.
119	Exchange Court	TONBRIDGE	For its entire length.
120	Exeter Close	TONBRIDGE	For its entire length.
121	Fairfield Crescent	TONBRIDGE	For its entire length.
122	Fairview Close	TONBRIDGE	For its entire length.
123	Faraday Ride	TONBRIDGE	For its entire length.
124	Farmground Close	TONBRIDGE	For its entire length.
125	Fernholt	TONBRIDGE	For its entire length.
126	Five Oak Green Road	TONBRIDGE	For its entire length.
127	Fleming Way	TONBRIDGE	For its entire length.
128	Foalhurst Close	TONBRIDGE	For its entire length.
129	Forest Grove	TONBRIDGE	For its entire length.
130	Fosse Bank Close	TONBRIDGE	For its entire length.
131	Fosse Road	TONBRIDGE	For its entire length.
132	Framley Road	TONBRIDGE	For its entire length.
133	Frank Woolley Road	TONBRIDGE	For its entire length.
134	Gainsborough Gardens	TONBRIDGE	For its entire length.
135	Garden Road	TONBRIDGE	For its entire length.
136	Gardyne Mews	TONBRIDGE	For its entire length.
137	George Street	TONBRIDGE	For its entire length.
138	Gilbert Close	TONBRIDGE	For its entire length.
139	Gladstone Road	TONBRIDGE	For its entire length.
140	Godfrey Evans Close	TONBRIDGE	For its entire length.
141	Goldsmid Road	TONBRIDGE	For its entire length.
142	Gorham Drive	TONBRIDGE	For its entire length.
143	Greenfrith Drive	TONBRIDGE	For its entire length.
144	Greentrees Avenue	TONBRIDGE	For its entire length.
145	Guards Close	TONBRIDGE	For its entire length.
146	Guestwick	TONBRIDGE	For its entire length.
147	Hadlow Road	TONBRIDGE	From its junction with Borden to a point 40 metres south west of its junction with Cannon Lane.
148	Hadlow Road East Service Road	TONBRIDGE	For its entire length.
149	Hadlow Stair Road	TONBRIDGE	For its entire length.
150	Hamble Road	TONBRIDGE	For its entire length.
151	Handel Walk	TONBRIDGE	For its entire length.
152	Hartfield Close	TONBRIDGE	For its entire length.

153	Harvest Road	TONBRIDGE	For its entire length.
154	Havelock Road	TONBRIDGE	For its entire length.
155	Hawden Road	TONBRIDGE	For its entire length.
156	Hawthorn Walk	TONBRIDGE	For its entire length.
157	Haydens Mews	TONBRIDGE	For its entire length.
158	Hazel Shaw	TONBRIDGE	For its entire length.
159	Hazlewood Close	TONBRIDGE	For its entire length.
160	Headley Close	TONBRIDGE	For its entire length.
161	Heather Walk	TONBRIDGE	For its entire length.
162	Hectorage Road	TONBRIDGE	For its entire length.
163	Helen Keller Close	TONBRIDGE	For its entire length.
164	High Street	TONBRIDGE	For its entire length.
165	Higham Gardens	TONBRIDGE	For its entire length.
166	Higham Lane	TONBRIDGE	For its entire length.
167	Higham School Road	TONBRIDGE	For its entire length.
168	Hillside	TONBRIDGE	For its entire length.
169	Hilltop	TONBRIDGE	For its entire length.
170	Holford Street	TONBRIDGE	For its entire length.
171	Hopgarden Road	TONBRIDGE	For its entire length.
172	Hops Close	TONBRIDGE	For its entire length.
173	Houselands Road	TONBRIDGE	For its entire length.
174	Howard Drive	TONBRIDGE	For its entire length.
175	Hunt Road	TONBRIDGE	For its entire length.
176	Ives Road	TONBRIDGE	For its entire length.
177	Judd Road	TONBRIDGE	For its entire length.
178	Kelvin Close	TONBRIDGE	For its entire length.
179	Kendal Close	TONBRIDGE	For its entire length.
180	Kendal Drive	TONBRIDGE	For its entire length.
181	Kennet Road	TONBRIDGE	For its entire length.
182	Keswick Close	TONBRIDGE	For its entire length.
183	Keyes Gardens	TONBRIDGE	For its entire length.
184	Kings Road	TONBRIDGE	For its entire length.
185	Kinnings Row	TONBRIDGE	For its entire length.
186	Knight Road	TONBRIDGE	For its entire length.
187	Lamberts Yard	TONBRIDGE	For its entire length.
188	Lambs Bank	TONBRIDGE	For its entire length.
189	Landseer Close	TONBRIDGE	For its entire length.
190	Lansdowne Road	TONBRIDGE	For its entire length.
191	Larch Crescent	TONBRIDGE	For its entire length.
192	Lavender Hill	TONBRIDGE	For its entire length.
193	Lavender Mews	TONBRIDGE	For its entire length.
194	Lawn Road	TONBRIDGE	For its entire length.
195	Lawrence Road	TONBRIDGE	For its entire length.
196	Leconfield Close	TONBRIDGE	For its entire length.
197	Lime Tree Close	TONBRIDGE	For its entire length.
198	Lionel Road	TONBRIDGE	For its entire length.
199	Lockington Close	TONBRIDGE	For its entire length.
200	Lockside	TONBRIDGE	For its entire length.

201	Lodge Oak Lane	TONBRIDGE	For its entire length.
202	Lodge Road	TONBRIDGE	For its entire length.
203	Loampits Close	TONBRIDGE	For its entire length.
204	London Road	TONBRIDGE	From its junction with Shipbourne Road to a point 25 metres west of the junction with Dry Hill Park Road.
205	Long Mead Way	TONBRIDGE	For its entire length.
206	Longmead Way	TONBRIDGE	For its entire length.
207	Lyons Crescent	TONBRIDGE	For its entire length.
208	Mabledon Road	TONBRIDGE	For its entire length.
209	Magnolia Close	TONBRIDGE	For its entire length.
210	Mann Square	TONBRIDGE	For its entire length.
211	Manor Grove	TONBRIDGE	For its entire length.
212	Martin Hardie Way	TONBRIDGE	For its entire length.
213	Masefield Way	TONBRIDGE	For its entire length.
214	Meadow Road	TONBRIDGE	For its entire length.
215	Medina Road	TONBRIDGE	For its entire length.
216	Medway Wharf Road	TONBRIDGE	For its entire length.
217	Merlin Close	TONBRIDGE	For its entire length.
218	Mersey Road	TONBRIDGE	For its entire length.
219	Mill Bank	TONBRIDGE	For its entire length.
220	Mill Crescent	TONBRIDGE	For its entire length.
221	Mill Lane	TONBRIDGE	For its entire length.
222	Mill Stream Place	TONBRIDGE	For its entire length.
223	Milton Gardens	TONBRIDGE	For its entire length.
224	Mitre Court	TONBRIDGE	For its entire length.
225	Molescroft Way	TONBRIDGE	For its entire length.
226	Mortley Close	TONBRIDGE	For its entire length.
227	Mountfield Park	TONBRIDGE	For its entire length.
228	Nelson Avenue	TONBRIDGE	For its entire length.
229	New Wharf Road	TONBRIDGE	For its entire length.
230	Newton Avenue	TONBRIDGE	For its entire length.
231	Norfolk Road	TONBRIDGE	For its entire length.
232	Northcote Road	TONBRIDGE	For its entire length.
233	Northwood Road	TONBRIDGE	For its entire length.
234	Norton Crescent	TONBRIDGE	For its entire length.
235	Norwich Avenue	TONBRIDGE	For its entire length.
236	Nursery Close	TONBRIDGE	For its entire length.
237	Oakmead	TONBRIDGE	For its entire length.
238	Oaks Close	TONBRIDGE	For its entire length.
239	Oakshott Close	TONBRIDGE	For its entire length.
240	Old Barn Close	TONBRIDGE	For its entire length.
241	Old Hadlow Road	TONBRIDGE	For its entire length.
242	Old London Road	TONBRIDGE	For its entire length.
243	Orchard Drive	TONBRIDGE	For its entire length.
244	Parkway	TONBRIDGE	For its entire length.

245	Parsons Place	TONBRIDGE	For its entire length.
246	Peach Hall	TONBRIDGE	For its entire length.
247	Pembroke Road	TONBRIDGE	For its entire length.
248	Pembury Grove	TONBRIDGE	For its entire length.
249	Pembury Road	TONBRIDGE	From its junction with Quarry Hill Road to a point 55 metres south of its junction with Tudeley Lane.
250	Pen Way	TONBRIDGE	For its entire length.
251	Penfolds Close	TONBRIDGE	For its entire length.
252	Pine Ridge	TONBRIDGE	For its entire length.
253	Pippins Close	TONBRIDGE	For its entire length.
254	Plane Walk	TONBRIDGE	For its entire length.
255	Portman Park	TONBRIDGE	For its entire length.
256	Preston Road	TONBRIDGE	For its entire length.
257	Priestley Drive	TONBRIDGE	For its entire length.
258	Priory Grove	TONBRIDGE	For its entire length.
259	Priory Road	TONBRIDGE	For its entire length.
260	Priory Street	TONBRIDGE	For its entire length.
261	Priory Walk	TONBRIDGE	For its entire length.
262	Purcell Avenue	TONBRIDGE	For its entire length.
263	Quarry Bank	TONBRIDGE	For its entire length.
264	Quarry Gardens	TONBRIDGE	For its entire length.
265	Quarry Hill Road	TONBRIDGE	From its junction with Railway Approach to its junction with Baltic Road.
266	Quarry Rise	TONBRIDGE	For its entire length.
267	Quincewood Gardens	TONBRIDGE	For its entire length.
268	Raeburn Close	TONBRIDGE	For its entire length.
269	Railway Approach	TONBRIDGE	For its entire length.
270	Ramblers Way	TONBRIDGE	For its entire length.
271	Red House Close	TONBRIDGE	For its entire length.
272	Redbud Road	TONBRIDGE	For its entire length.
273	Rembrandt Close	TONBRIDGE	For its entire length.
274	Reynolds Close	TONBRIDGE	For its entire length.
275	Ridgeway Crescent	TONBRIDGE	For its entire length.
276	River Lawn Road	TONBRIDGE	For its entire length.
277	River Walk	TONBRIDGE	For its entire length.
278	Rochester Road	TONBRIDGE	For its entire length.
279	Rodney Avenue	TONBRIDGE	For its entire length.
280	Romney Way	TONBRIDGE	For its entire length.
281	Rose Street	TONBRIDGE	For its entire length.
282	Rother Road	TONBRIDGE	For its entire length.
283	Rowan Mews	TONBRIDGE	For its entire length.
284	Rowan Shaw	TONBRIDGE	For its entire length.
285	Royal Avenue	TONBRIDGE	For its entire length.
286	Royal Rise	TONBRIDGE	For its entire length.
287	Royal West Kent Avenue	TONBRIDGE	For its entire length.
288	Rutherford Way	TONBRIDGE	For its entire length.



289	Salisbury Close	TONBRIDGE	For its entire length.
290	Salisbury Road	TONBRIDGE	For its entire length.
291	Scott Road	TONBRIDGE	For its entire length.
292	Severn Close	TONBRIDGE	For its entire length.
293	Shakespeare Road	TONBRIDGE	For its entire length.
294	Shandon Close	TONBRIDGE	For its entire length.
295	Shelton Close	TONBRIDGE	For its entire length.
296	Shipbourne Road	TONBRIDGE	From its junction with Portman Park to a point 30 metres north of its junction with Willow Lea.
297	Silver Close	TONBRIDGE	For its entire length.
298	Silverhurst Drive	TONBRIDGE	For its entire length.
299	Somerhill Road	TONBRIDGE	For its entire length.
300	Sovereign Way	TONBRIDGE	From its junction with Medway Wharf Road to a point 8 metres south east of its junction with Avenue Du Puy.
301	Speyside	TONBRIDGE	For its entire length.
302	Springwell Road	TONBRIDGE	For its entire length.
303	St Bernards Road	TONBRIDGE	For its entire length.
304	St Eanswythes Court	TONBRIDGE	For its entire length.
305	St Georges Mews	TONBRIDGE	For its entire length.
306	St Marys Road	TONBRIDGE	For its entire length.
307	St Pauls Close	TONBRIDGE	For its entire length.
308	St Stephens Street	TONBRIDGE	For its entire length.
309	Stafford Road	TONBRIDGE	For its entire length.
310	Stainer Road	TONBRIDGE	For its entire length.
311	Stair Road	TONBRIDGE	For its entire length.
312	Stour Close	TONBRIDGE	For its entire length.
313	Strawberry Vale	TONBRIDGE	For its entire length.
314	Streamside	TONBRIDGE	For its entire length.
315	Sullivan Road	TONBRIDGE	For its entire length.
316	Sussex Road	TONBRIDGE	For its entire length.
317	Swanland Drive	TONBRIDGE	For its entire length.
318	Tamar Road	TONBRIDGE	For its entire length.
319	Tannery Road	TONBRIDGE	For its entire length.
320	Taylor Close	TONBRIDGE	For its entire length.
321	Thames Road	TONBRIDGE	For its entire length.
322	The Avenue	TONBRIDGE	For its entire length.
323	The Birches	TONBRIDGE	For its entire length.
324	The Brent	TONBRIDGE	For its entire length.
325	The Chase	TONBRIDGE	For its entire length.
326	The Crescent	TONBRIDGE	For its entire length.
327	The Drive	TONBRIDGE	For its entire length.
328	The Haydens	TONBRIDGE	For its entire length.
329	The Ridgeway	TONBRIDGE	For its entire length.
330	The Slade	TONBRIDGE	For its entire length.

331	The Spinney	TONBRIDGE	For its entire length.
332	The Wynd	TONBRIDGE	For its entire length.
333	Thiepval Drive	TONBRIDGE	For its entire length.
334	Thorpe Avenue	TONBRIDGE	For its entire length.
335	Tilebarn Corner	TONBRIDGE	For its entire length.
336	Town Acres	TONBRIDGE	For its entire length.
337	Treetops	TONBRIDGE	For its entire length.
338	Trench Road	TONBRIDGE	For its entire length.
339	Truro Walk	TONBRIDGE	For its entire length.
340	Tudeley Lane	TONBRIDGE	For its entire length.
341	Tulip Tree Close	TONBRIDGE	For its entire length.
342	Turner Road	TONBRIDGE	For its entire length.
343	Tweed Road	TONBRIDGE	For its entire length.
344	Tyne Road	TONBRIDGE	For its entire length.
345	Uridge Crescent	TONBRIDGE	For its entire length.
346	Uridge Road	TONBRIDGE	For its entire length.
347	Vale Road	TONBRIDGE	From its junction with Railway Approach to its junction with Sovereign Way.
348	Valley Close	TONBRIDGE	For its entire length.
349	Valley Forge Close	TONBRIDGE	For its entire length.
350	Vaughan Avenue	TONBRIDGE	For its entire length.
351	Vauxhall Gardens	TONBRIDGE	For its entire length.
352	Walton Road	TONBRIDGE	For its entire length.
353	Waterloo Place	TONBRIDGE	For its entire length.
354	Waterloo Road	TONBRIDGE	For its entire length.
355	Waveney Road	TONBRIDGE	For its entire length.
356	Weald View Road	TONBRIDGE	For its entire length.
357	Welland Road	TONBRIDGE	For its entire length.
358	Wells Close	TONBRIDGE	For its entire length.
359	Welton Close	TONBRIDGE	For its entire length.
360	West Rise	TONBRIDGE	For its entire length.
361	Wheatsheaf Way	TONBRIDGE	For its entire length.
362	Whistler Road	TONBRIDGE	For its entire length.
363	White Cottage Road	TONBRIDGE	For its entire length.
364	White Oak Close	TONBRIDGE	For its entire length.
365	Whitefriars Wharf	TONBRIDGE	For its entire length.
366	Whitelake Road	TONBRIDGE	For its entire length.
367	Willow Lea	TONBRIDGE	For its entire length.
368	Wilson Road	TONBRIDGE	For its entire length.
369	Winchester Road	TONBRIDGE	For its entire length.
370	Wincliff Road	TONBRIDGE	For its entire length.
371	Woodfield Road	TONBRIDGE	For its entire length.
372	Woodlands Road	TONBRIDGE	For its entire length.
373	Woodside Road	TONBRIDGE	For its entire length.
374	Wye Road	TONBRIDGE	For its entire length.
375	Yardley Close	TONBRIDGE	For its entire length.
376	Yardley Park Road	TONBRIDGE	For its entire length.

377	York Parade	TONBRIDGE	For its entire length.
378	York Road	TONBRIDGE	For its entire length.

#### CITATION AND COMMENCEMENT

This Order may be cited as "The Kent County Council (Various Roads, Tonbridge) (The Borough of Tonbridge & Malling) (20mph Speed Limit) Experimental Order 2020" ('this Order') and shall come into operation on the 14<sup>th</sup> day of September 2020.

Unless this Order is revoked or made permanent by a subsequent Order, this Order shall cease to have effect on 13<sup>th</sup> March 2022.

GIVEN under the Common Seal of the Kent County Council

This                      day of                      2020.

**THE COMMON SEAL OF THE  
KENT COUNTY COUNCIL was  
hereunto affixed in the  
presence of:-**

Authorised Signatory

# STATEMENT OF REASONS



**THE KENT COUNTY COUNCIL  
(VARIOUS ROADS, TONBRIDGE)  
(THE BOROUGH OF TONBRIDGE & MALLING)  
(20MPH SPEED LIMIT)  
EXPERIMENTAL ORDER 2020**

The Kent County Council as traffic authority intends to make the Order referred to above and as shown on the drawing accompanying this document for the following reasons: -

- avoid the danger to persons or other traffic using the road or any other road or for preventing the likelihood of any such danger arising.
- for preserving or improving the amenities of the area through which the road runs.

Simon Jones  
Director of Highways, Transportation and Waste

# PUBLIC NOTICE

**Kent  
County  
Council**  
[kent.gov.uk](http://kent.gov.uk)



## **THE KENT COUNTY COUNCIL (VARIOUS ROADS, TONBRIDGE) (THE BOROUGH OF TONBRIDGE & MALLING) (20MPH SPEED LIMIT) EXPERIMENTAL ORDER 2020**

THE KENT COUNTY COUNCIL, acting as Local Traffic Authority and in exercise of its powers under Sections 9 and 10 of, and Part VI of Schedule 9 to, the Road Traffic Regulation Act 1984 (hereinafter referred to as "the Act") as amended, and of all other enabling powers and after consultation with the Chief Officer of Police in accordance with Part III of Schedule 9 to the Act, hereby make the following Order.

The effect of the Order would be to introduce a Tonbridge wide 20mph speed limit on the following lengths of roads:

**Albany Close, Albert Road, Alders Meadow, Aldwych Close, Alexandra Road, Allington Drive, Amberley Close, Angel Lane, Annison Street, Arne Close, Arnolds Court, Arundel Close, Ashburnham Road, Ashden Walk, Atkins Close, Audley Avenue, Audley Rise, Avebury Avenue, Avenue Du Puy, Avenue Le Puy, Avon Close, Baker Lane, Baltic Road, Bank Street, Barchester Way, Barclay Avenue, Barden Park Road, Barden Road, Beaulieu Road, Beecham Road, Beechmont Rise, Beverley Crescent, Bickmore Way, Bishops Close, Bishops Oak Ride, Bliss Way, Bordyke, Botany, Bourne Close, Bourne Lane, Bracken Walk, Bradford Street, Bradley Street, Brantingham Close, Briar Walk, Brickworks Close, Brindles Field, Brindle's Field, Brionne Gardens, Britten Close, Brock Lane, Brookes Gardens, Burns Crescent, Cage Green Road, Caistor Road, Cannons Wharf, Canterbury Crescent, Cardinal Close, Castle Street, Castlefields, Cavendish Close, Caxton Mews, Cedar Crescent, Chaucer Gardens, Cherry Grove, Cherry Tree Road, Cherwell Close, Chestnut Walk, Chestnuts Close, Cheviot Close, Chichester Road, Chiltern Way, Church Lane, Church Street, Clare Avenue, Clyde Road, Colin Blythe Road, College Avenue, Colne Road, Commercial Road, Constable Road, Copper Beech View, Cornfield Way, Coventry Road, Cowdreys, Crabapple Road, Cranford Road, Croft Close, Cromer Street, Dame Kelly Holmes Way, Danvers Road, Darenth Avenue, Darwin Drive, Deakin Leas, Delius Drive, Denbeigh Drive, Dernier Road, Derwent Road, Dodd Road, Douglas Road, Dove Road, Dowgate Close, Drayton Road, Driffield Gardens, Dry Bank Court, Dry Bank Road, Dry Hill Park Crescent, Dry Hill Park Road, Dry Hill Road, Dudley Keen Court, East Street, Eastfield Gardens, Elgar Close, Elm Lane, Elmshurst Gardens, Ely Gardens, Estridge Way, Exchange Court, Exeter Close, Fairfield Crescent, Fairview Close, Faraday Ride, Farmground Close, Fernholt, Five Oak Green Road, Fleming Way, Foalhurst Close, Forest Grove, Fosse Bank Close, Fosse Road, Framley Road, Frank Woolley Road, Gainsborough Gardens, Garden Road, Gardyne Mews, George Street, Gilbert Close, Gladstone Road, Godfrey Evans Close, Goldsmid Road, Gorham Drive, Greenfrith Drive, Greentrees Avenue, Guards Close, Guestwick, Hadlow Road East Service Road, Hadlow Stair Road, Hamble Road, Handel Walk, Hartfield Close, Harvest Road, Havelock Road, Hawden Road, Hawthorn Walk, Haydens Mews, Hazel Shaw, Hazlewood Close, Headley Close, Heather Walk, Hectorage Road, Helen Keller Close, High Street, Higham Gardens, Higham Lane, Higham School Road, Hillside, Hilltop, Holford Street, Hopgarden Road, Hops Close, Houselands Road, Howard Drive, Hunt Road, Ives Road, Judd Road, Kelvin Close, Kendal Close, Kendal Drive, Kennet Road, Keswick Close, Keyes Gardens, Kings Road, Kinnings Row, Knight Road, Lamberts Yard, Lambs Bank, Landseer Close, Lansdowne Road, Larch Crescent, Lavender Hill, Lavender Mews, Lawn Road, Lawrence Road, Leconfield Close, Lime Tree Close, Lionel Road, Loampits Close, Lockington Close, Lockside, Lodge Oak Lane, Lodge Road, Long Mead Way, Longmead Way, Lyons Crescent, Mabledon Road, Magnolia Close, Mann Square, Manor Grove, Martin Hardie Way, Masefield Way, Meadow Road, Medina Road, Medway Wharf Road, Merlin Close, Mersey Road, Mill Bank, Mill Crescent, Mill Lane, Mill Stream Place, Milton Gardens, Mitre Court, Molescroft Way, Mortley Close, Mountfield Park, Nelson Avenue, New Wharf Road, Newton Avenue, Norfolk Road, Northcote Road, Northwood Road, Norton Crescent, Norwich Avenue, Nursery Close, Oakmead, Oaks Close, Oakshott Close, Old Barn Close, Old Hadlow Road, Old London Road, Orchard Drive, Parkway, Parsons Place, Peach Hall, Pembroke Road, Pembury Grove, Pen Way, Penfolds Close,**

Pine Ridge, Pippins Close, Plane Walk, Portman Park, Preston Road, Priestley Drive, Priory Grove, Priory Road, Priory Street, Priory Walk, Purcell Avenue, Quarry Bank, Quarry Gardens, Quarry Rise, Quincewood Gardens, Raeburn Close, Railway Approach, Ramblers Way, Red House Close, Redbud Road, Rembrandt Close, Reynolds Close, Ridgeway Crescent, River Lawn Road, River Walk, Rochester Road, Rodney Avenue, Romney Way, Rose Street, Rother Road, Rowan Mews, Rowan Shaw, Royal Avenue, Royal Rise, Royal West Kent Avenue, Rutherford Way, Salisbury Close, Salisbury Road, Scott Road, Severn Close, Shakespeare Road, Shandon Close, Shelton Close, Silver Close, Silverhurst Drive, Somerhill Road, Speyside, Springwell Road, St Bernards Road, St Eanswythes Court, St Georges Mews, St Marys Road, St Pauls Close, St Stephens Street, Stafford Road, Stainer Road, Stair Road, Stour Close, Strawberry Vale, Streamside, Sullivan Road, Sussex Road, Swanland Drive, Tamar Road, Tannery Road, Taylor Close, Thames Road, The Avenue, The Birches, The Brent, The Chase, The Crescent, The Drive, The Haydens, The Ridgeway, The Slade, The Spinney, The Wynd, Thiepval Drive, Thorpe Avenue, Tilebarn Corner, Town Acres, Treetops, Trench Road, Truro Walk, Tudeley Lane, Tulip Tree Close, Turner Road, Tweed Road, Tyne Road, Uridge Crescent, Uridge Road, Valley Close, Valley Forge Close, Vaughan Avenue, Vauxhall Gardens, Walton Road, Waterloo Place, Waterloo Road, Waveney Road, Weald View Road, Welland Road, Wells Close, Welton Close, West Rise, W heatsheaf Way, Whistler Road, White Cottage Road, White Oak Close, Whitefriars Wharf, Whitelake Road, Willow Lea, Wilson Road, Winchester Road, Wincliff Road, Woodfield Road, Woodlands Road, Woodside Road, Wye Road, Yardley Close, Yardley Park Road, York Parade and York Road – For their entire length. **Brook Street** – From its junction with Quarry Hill Road to a point 12 metres east of its junction with Lower Haysden Lane. **Hadlow Road** – From its junction with Bordyke to a point 40 metres south west of its junction with Cannon Lane. **London Road** – From its junction with Shipbourne Road to a point 25 metres west of the junction with Dry Hill Park Road. **Pembury Road** – From its junction with Quarry Hill Road to a point 55 metres south of its junction with Tudeley Lane. **Quarry Hill Road** – From its junction with Railway Approach to its junction with Baltic Road. **Shipbourne Road** – From its junction with Portman Park to a point 30 metres north of its junction with Willow Lea. **Sovereign Way** – From its junction with Medway Wharf Road to a point 8 metres south east of its junction with Avenue Du Puy. **Vale Road** – From its junction with Railway Approach to its junction with Sovereign Way.

The Order will be implemented by the 18 September 2020 on an experimental basis for a period of eighteen months after which time it will be reviewed. The Council may then make the Order permanent or abandon it. Any existing speed limit in the list of roads above which are above 20MPH will be suspended for the duration of the Experimental Order.

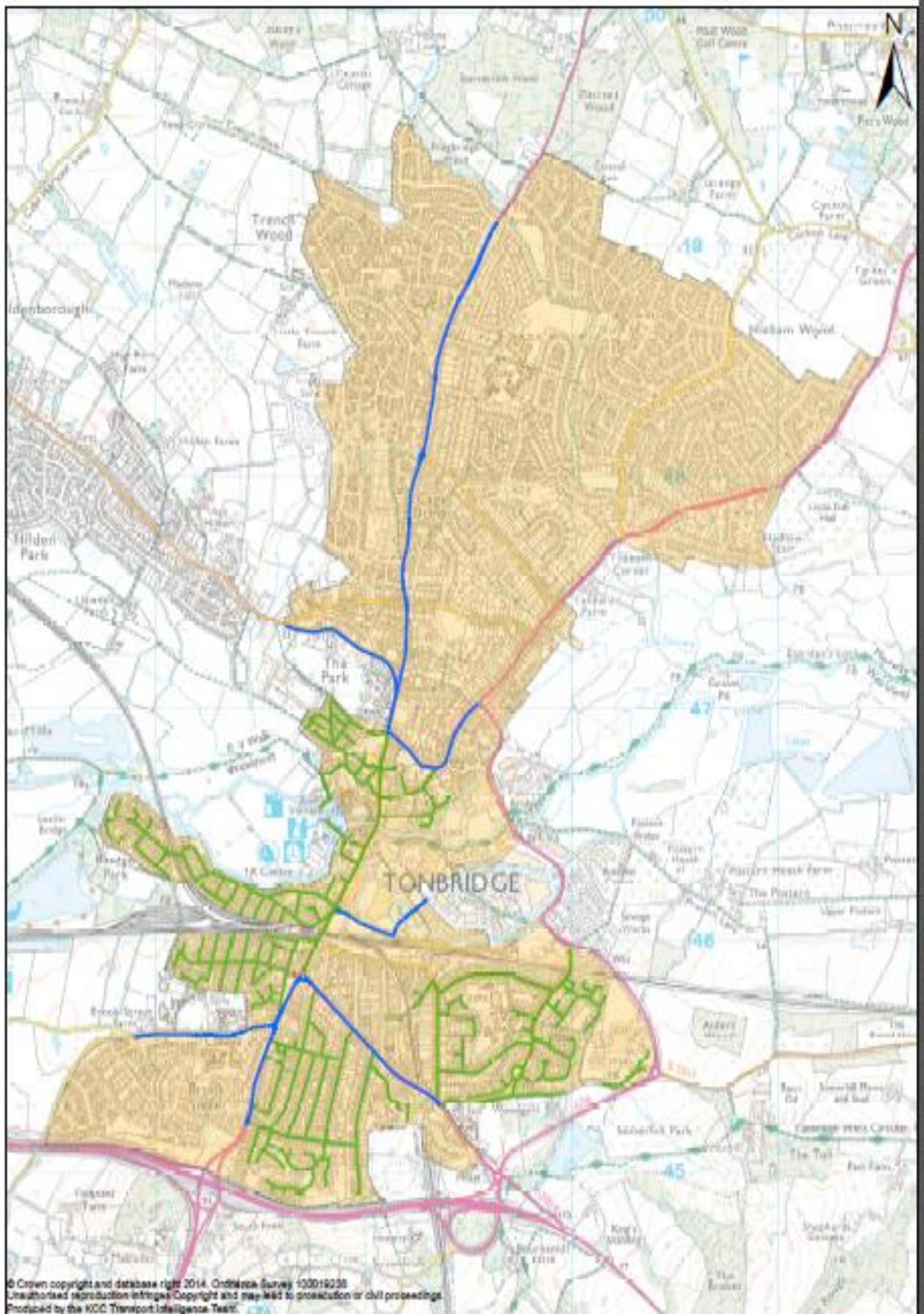
A full detailed statement of the Council's reasons for making the Experimental Order may be examined on Monday to Friday at Kent County Council, Sessions House, Maidstone, ME14 1XQ, at The Kent County Council, Kent Highway & Transportation, Ashford Highway Depot, Henwood Industrial Estate, Unit 4 Javelin Way, Ashford, Kent TN24 8AD, at the Borough Council and the local library during normal office hours or viewed online at [www.kent.gov.uk/highwaysconsultations](http://www.kent.gov.uk/highwaysconsultations)

Any person wishing to make representations whether to object or support the Order before it is made permanent must do so via our website using the above link or alternatively you can write quoting the reference (TRO/Experimental/Tonbridge20MPHZone) specifying the grounds on which they are made within 6 months (noon on Wednesday 3 March 2021) of the Experimental Order coming into force or if the Order is subsequently varied or modified within 6 months of the variation or modification coming into force to, The TRO Co-ordinator, Schemes Planning & Delivery Team, Highways, Transportation & Waste, Kent County Council, Ashford Highway Depot, Henwood Industrial Estate, Javelin Way, Ashford, TN24 8AD by 12 noon on Wednesday 3 March 2021.

**Simon Jones**

Director of Highways, Transportation and Waste





**Tonbridge town wide 20mph zone**

**Legend**

- Extent of 20mph zone on arterial routes
- Existing 20mph
- Proposed 20mph extent

