



NOTICE OF CONFIRMATION OF PUBLIC PATH ORDER

TOWN AND COUNTRY PLANNING ACT 1990, SECTION 257

**GRAVESHAM BOROUGH COUNCIL (PUBLIC FOOTPATHS NG19 (PART) AND NU17
GRAVESEND) PUBLIC PATH DIVERSION ORDER 2019**

On 20th May 2019 Gravesham Borough Council confirmed the above Order under section 257 of the Town and Country Planning Act 1990.

The effect of the Order, as confirmed, will be to divert the entire width of that length of Public Footpath numbered **NG19** which commences at its junction with the unaffected length of Public Footpath NG19 at NGR TQ 6408 7171 (point A on the Order plan) and runs in a westerly direction for 55 metres to its connection with Public Footpath NU17 at NGR TQ 6403 7171 (point B on the Order plan) and that length of **Public Footpath numbered NU17** which commences at its junction with Public Footpath NG19 at NGR TQ 6403 7171 (point B on the Order plan) and runs in a westerly direction for 106 metres to its connection with Public Footpath NU25 at NGR TQ 6392 7171 (point C on the Order plan) and to provide a new length of **Public Footpath numbered NG19** with a width of 3.0 metres which commences at the previously mentioned point A at NGR TQ 6408 7171 and runs in a west south-westerly, then westerly direction for approximately 56 metres to NGR TQ 6403 7171 (point B on the Order plan) and a new length of **Public Footpath numbered NU17** with a width of 3.0 metres which commences at its junction with Public Footpath NG19 at NGR TQ 6403 7171 (point B on the Order plan) and runs in a westerly then west south-westerly direction for 103 metres to a new connection with Public Footpath NU25 at NGR TQ 6393 7169 (point D on the Order plan).

All directions are general, all distances are approximate.

A copy of the Order as confirmed and the Map have been placed and may be seen free of charge at the offices of Gravesham Borough Council, Civic Centre, Windmill Street, Gravesend, Kent, DA12 1AU or at the Kent County Council, PROW and Access Service, Invicta House, County Hall, Maidstone ME14 1XX during office hours. Copies of the Order and Map may be purchased there at the price of £10.

The Order comes into force on the date upon which the Kent County Council, on behalf of Gravesham Borough Council, certify that the terms of article 2 of the Order has been complied with, but if any person aggrieved by the Order desires to question its validity or that of any provision contained in it on the ground that it is not within the powers of the above Act, or on the ground that any requirement of that Act, or any regulation made under it has not been complied with in relation to the confirmation of the Order, he or she may apply to the High Court for any of these purposes under section 287 of the Town and Country Planning Act 1990 within 6 weeks from the date on which notice is first published as required by paragraph 7 of Schedule 14 to that Act.

PROW and Access Service
Kent County Council
Invicta House
County Hall
Maidstone
Kent, ME14 1XX

DATE: 2nd August 2019

**This document is available in alternative formats and can be explained in a
range of languages**

GRAVESHAM BOROUGH COUNCIL

TOWN AND COUNTRY PLANNING ACT 1990, SECTION 257

(PUBLIC FOOTPATHS NG19 (PART) AND NU17 GRAVESEND)

PUBLIC PATH DIVERSION ORDER 2019

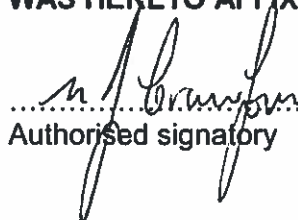
This Order is made by the Gravesham Borough Council under Section 257 of the Town and Country Planning Act 1990 because it is satisfied that it is necessary to divert the footpaths to which this Order relates in order to enable development to be carried out (in accordance with planning permission granted under part III of the Town and Country Planning Act 1990), namely planning reference 20180041 for the Reserved Matters Application for the approval of details of appearance, landscaping, layout and scale pursuant to outline planning permission reference number 20141214 for residential development for up to 400 new homes, including details pursuant to conditions 4, 6, 7, 8, 10, 11, 14, 27, 28, 31, 32, 33, 35, 39, 44 and 45 and being: 4 - compliance with outline plans, 6 - compliance with density/storey heights, 7 - levels, 8 - design code, 10 - compliance with space standards, 11 - sustainable energy measures, 14 - noise levels, 27 - northern road link, 28 - pedestrian/cycle access, 31 - design of roads etc., 32 - vehicle parking, 33 - electric cabling, 35 - cycle parking, 39 - external lighting, 44 - existing trees/hedges, and 45 - ecology/biodiversity measures.

BY THIS ORDER:-

1. The public footpaths over the land shown by bold black lines on the attached map and described in Part I of the Schedule to this Order shall be stopped up as provided below.
2. There shall be created to the reasonable satisfaction of the Kent County Council – on behalf of Gravesham Borough Council - an alternative highway for use as a replacement for the said public footpaths as provided in Part II of the Schedule and shown by bold black dashes on the attached map.
3. The diversion of the public footpaths shall have effect on the date on which the Kent County Council - on behalf of Gravesham Borough Council - certify that the terms of article 2 have been complied with.
5. Bovis Homes and Persimmon Homes are required to pay for the costs of bringing the new route into a fit condition for public use.

**GIVEN UNDER THE SEAL OF GRAVESHAM BOROUGH COUNCIL
THIS 26th DAY OF MARCH IN THE YEAR TWO THOUSAND AND NINETEEN.**

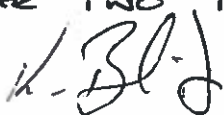
**THE COMMON SEAL OF GRAVESHAM BOROUGH COUNCIL
WAS HERETO AFFIXED IN THE PRESENCE OF**


.....
Authorised signatory



**THIS ORDER WAS CONFIRMED BY
GRAVESHAM BOROUGH COUNCIL ON
THIS 20th DAY OF MAY IN THE
YEAR TWO THOUSAND AND NINETEEN .**

17, 124


AUTHORISED SIGNATORY .

SCHEDULE

PART I

DESCRIPTION OF SITE OF EXISTING PATH OR WAY

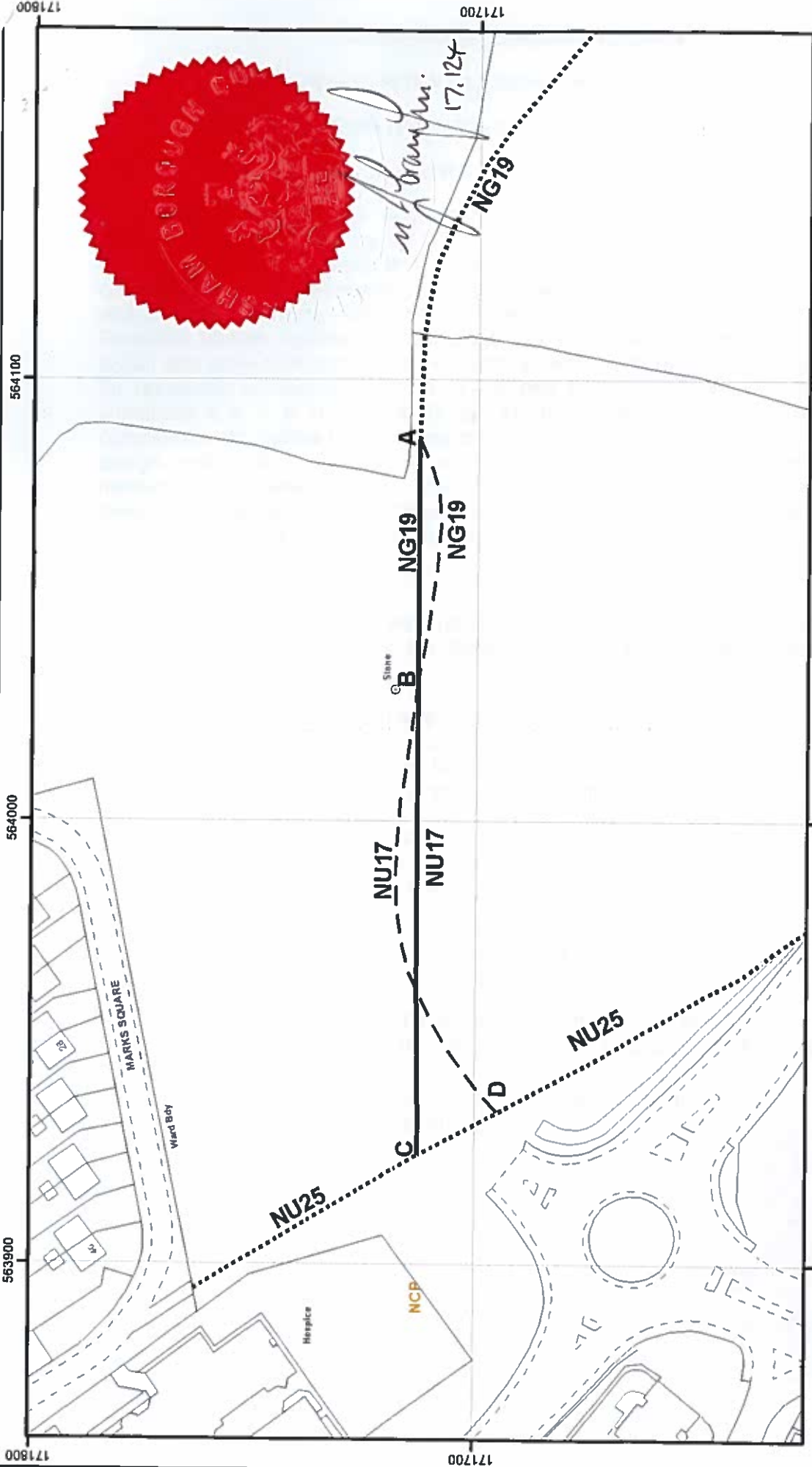
The entire width of that length of **Public Footpath numbered NG19** which commences at its junction with the unaffected length of Public Footpath NG19 at NGR TQ 6408 7171 (point A on the Order plan) and runs in a generally westerly direction for approximately 55 metres to its connection with Public Footpath NU17 at NGR TQ 6403 7171 (point B on the Order plan) and that length of **Public Footpath numbered NU17** which commences at its junction with Public Footpath NG19 at NGR TQ 6403 7171 (point B on the Order plan) and runs in a generally westerly direction for approximately 106 metres to its connection with Public Footpath NU25 at NGR TQ 6392 7171 (point C on the Order plan).

PART II

DESCRIPTION OF SITE OF ALTERNATIVE HIGHWAY

A new length of **Public Footpath numbered NG19** with a width of 3.0 metres which commences at the previously mentioned point A at NGR TQ 6408 7171 and runs in a generally west south-westerly, then westerly direction for approximately 56 metres to NGR TQ 6403 7171 (point B on the Order plan) and a new length of **Public Footpath numbered NU17** with a width of 3.0 metres which commences at its junction with Public Footpath NG19 at NGR TQ 6403 7171 (point B on the Order plan) and runs in a generally westerly then west south-westerly direction for approximately 103 metres to a new connection with Public Footpath NU25 at NGR TQ 6393 7169 (point D on the Order plan).

**GRAVESHAM BOROUGH COUNCIL
TOWN AND COUNTRY PLANNING ACT 1990, SECTION 257
(PUBLIC FOOTPATHS NG19 (PART) AND NU17 GRAVESEND)
PUBLIC PATH DIVERSION ORDER 2019**



<p>Key</p> <ul style="list-style-type: none"> — Route to be stopped up - - - New length of route Unaffected Routes 		<p>Town & Country Planning Act 1990 Gravesham Borough Council (Public Footpaths NG19 (part) and NU17 Gravesend) Public Path Diversion Order 2019</p>		<p>0 Kilometres 0.05 0.1 0 Miles 0.03 0.06</p>		<p>Produced by the KCC Public Rights of Way and Access Service © Crown Copyright and database right 2013. Ordnance Survey 100019238</p>	
<p>Public Rights of Way and Access Service</p>		<p>Gravesham Borough Council</p>		<p>Created by: LJW Checked by: GR Reference: PROW/NU17-NG19/0076/GBC</p>		<p>1:1,250</p> <p>Kent County Council</p>	